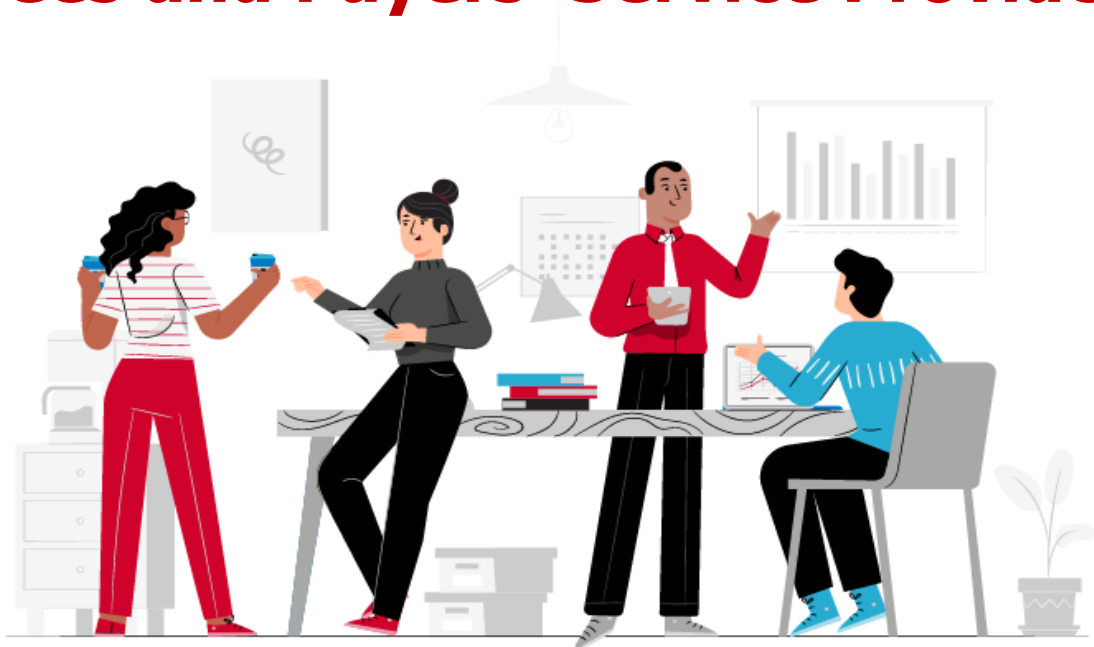




Sepa Request-To-Pay Homologation Guide

Payees and Payers' Service Providers



The world is how we shape it

Table of contents

1. Versioning	3
2. Introduction	4
2.1. Purpose of the homologation guide.....	4
2.2. Reminder about SRTP scheme	4
2.3. Abbreviations	6
2.4. Reference documents	6
2.5. Reminder of the global homologation process and its testing phase.....	7
3. Execution of a technical and functional testing campaign	7
3.1. Connectivity with the simulation tool	7
4. Technical and functional tests execution features	8
4.1. Support document	8
4.2. Tests groups	8
4.3. Homologation tool features	9
4.3.1. Responder mode	10
4.3.2. Requester mode	10
5. Final outcome.....	11

1. Versioning

Version Number	Date	Person	Reason for revision
V.1.0	14/04/2023	Bruno DUBOIS	Document creation
V.2.0	13/07/2023 28/07/2023	Laura LEMONNIER Kay DIBA	Addition of versioning and abbreviations Reference Document, completed Format correction: document's language,
V.3.0	02/10/2023	Kay DIBA	Addition of 4 connectivity tests to validate the QWAC certificate (PYEE-RTP.00.a and PYER-RTP.00.a) Adding 6 return code tests (RTP from Payee with return different Errors: (codes 401, 406, 409, 416, 422, 429) Adding 8 tests RfC of already rejected RTP. Adding 5 tests of Invalid RfC from Payee's RTP
V.3.1	14/11/2023	Bruno Dubois	Addition of several clarifications
V.3.2	19/04/2024	Bruno Dubois	Addition of test groups
V.3.3	17/12/2025	I. CLARO MARINHO	Typo updates

2. Introduction

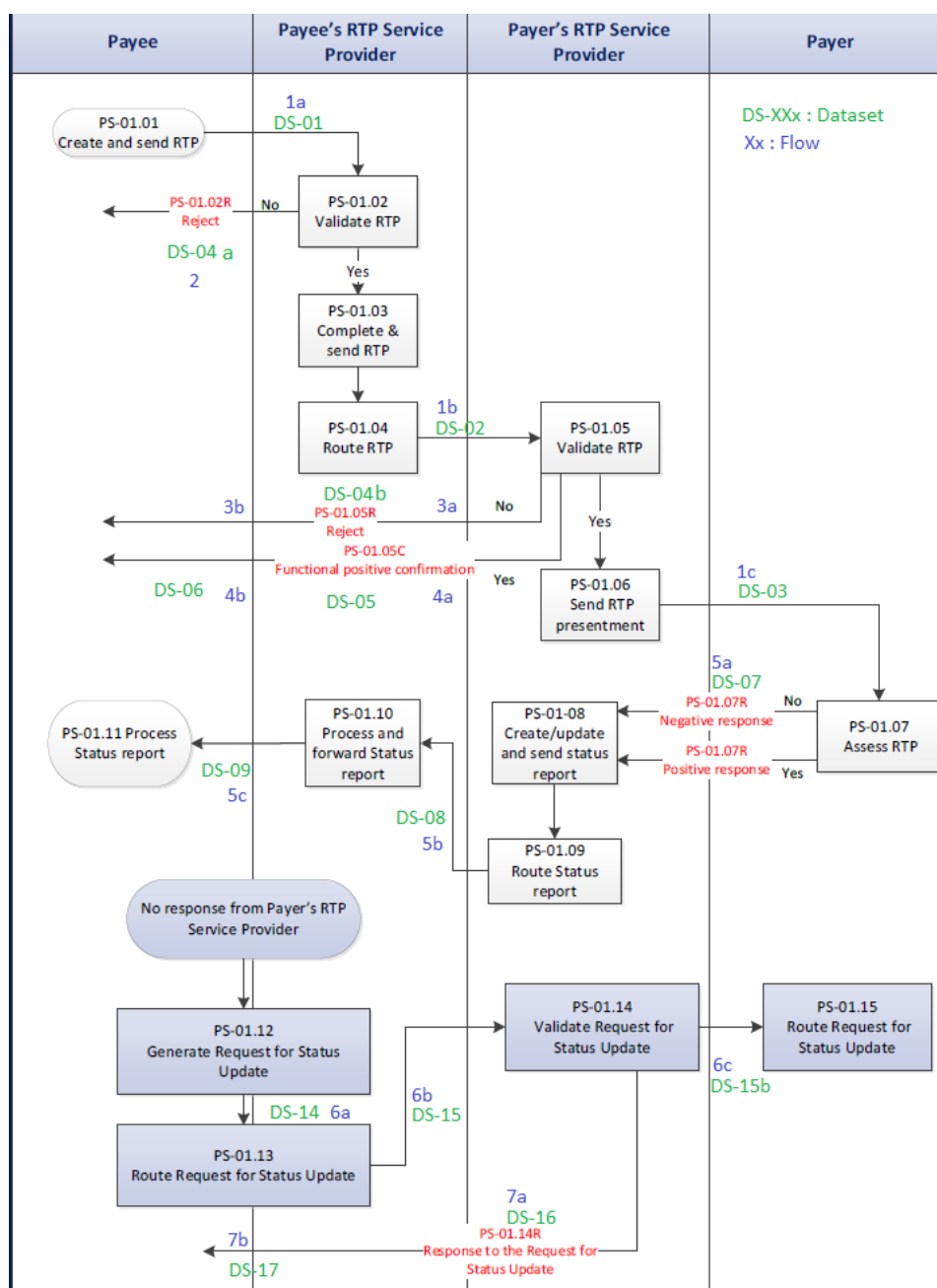
2.1. Purpose of the homologation guide

The purpose of this homologation guide is to provide the applicant with information on how SRTP homologation tests will be performed together with the technical and functional testing team and its tool.

This document complements the Test Plan where all test cases are defined.

2.2. Reminder about SRTP scheme

Sepa Request-To-Pay scheme workflows with their dataset messages:



Sepa RTP Request and update

2.3. Abbreviations

Term/Abbreviation	Definition
EPC	European Payment Council
SEPA	Single Euro Payments Area
RTP	Request To Pay
RfC	Request for Cancellation
PSP	Payment Service Provider
SP	Service Provider
SUT	System Under Test
PYEE	Payee
PYER	Payer

2.4. Reference documents

Name	Source	version
SEPA_RTP_Scheme Rulebook	EPC	v3.1
EPC216-20 Clarification Paper SRTP Rulebook	EPC	v3.0
EPC137-22 - SRTP related API Specifications - Preliminary Information	EPC	v3.1
EPC240-22 SRTP related API Security Framework	EPC	v1.0
EPC259-22 Inter-RTP Service Provider SRTP IG	EPC	V3.0
EPC133-22 - SRTP scheme rulebook related API specifications	EPC	v3.1
SEPA_RTP_Homologation_Guide	Sopra Steria/Galitt	V3.0 or superior
SEPA_RTP_Test_Plan-GALITT	Sopra Steria/Galitt	V3.0 or superior
SEPA_RTP_Test_Report_Template	Sopra Steria/Galitt	V3.0 or superior

2.5. Reminder of the global homologation process and its testing phase

All the homologation campaigns start with a Kick-off meeting.

During this meeting, we explain to the applicant how the Assessment and testing will be conducted:

1. Initial kick-off meeting
2. Homologator sends the applicant questionnaires
3. The applicant completes the questionnaire with the documents asked in attachment (Digi Home)
4. Homologation body analyze process
 - 4.1. Start-up assessments
 - 4.2. Review and assessment of information
 - 4.3. Kick-off meeting for testing and security testing
 - 4.4. Technical and Functional testing phase
 - 4.5. Penetration testing phase
5. The homologator completes the document "SEPA_RTP_Test_Report_Template" with the tests results
6. The homologator sends the document "SEPA_RTP_Test_Report_Template" to EPC and the applicant.

This homologation guide concerns only technical and functional testing, which is highlighted in the above process.

3. Execution of a technical and functional testing campaign

A campaign will follow the following steps:

- 1) T&F kick-off meeting : a check-up of all necessary information is performed
- 2) A connectivity check is performed
- 3) Test cases execution

3.1. Connectivity with the simulation tool

The communication with the simulation tool will be performed with a SSL certificate: a QWAC certificate is specified by EPC for the communication.

The URL to contact is : <https://testing-srtp.galitt.com>

Note that a DNS entry may be added to platform to manage this specific URL and its specific IP address: **51.178.113.33**

The tool communicates with IPs and ports. It's always interesting to have a URL with its target IP and port to avoid any misunderstanding while communicating with other servers.

At the input of the platform, a QWAC certificate will be used for server communication (the simulator listens) and for client communication (the simulator connects to another server).

4. Technical and functional tests execution features

4.1. Support document

The main document used during the homologation is a test list featuring the following information:

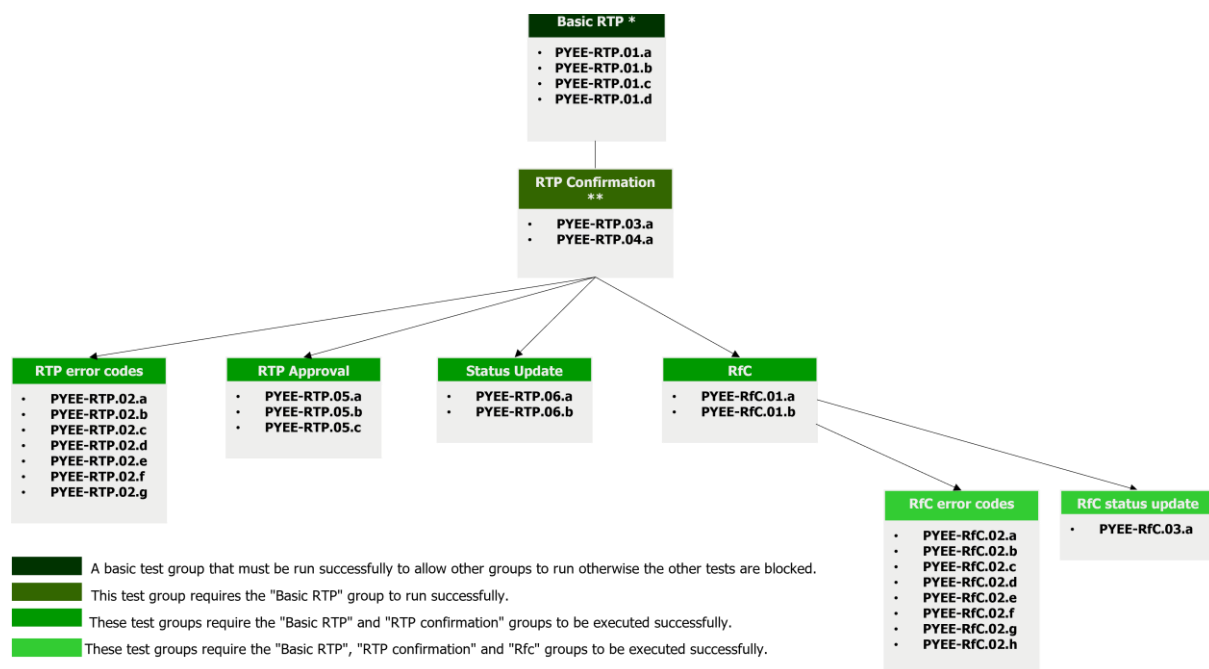
- All the test cases from the test plan
- All tests status (PASS, FAIL or BLOCKED)
- Comments about each test execution
- Tests executions date and time
- Tests executions logs names

These documents are managed by the Homologation Body throughout the whole test execution.

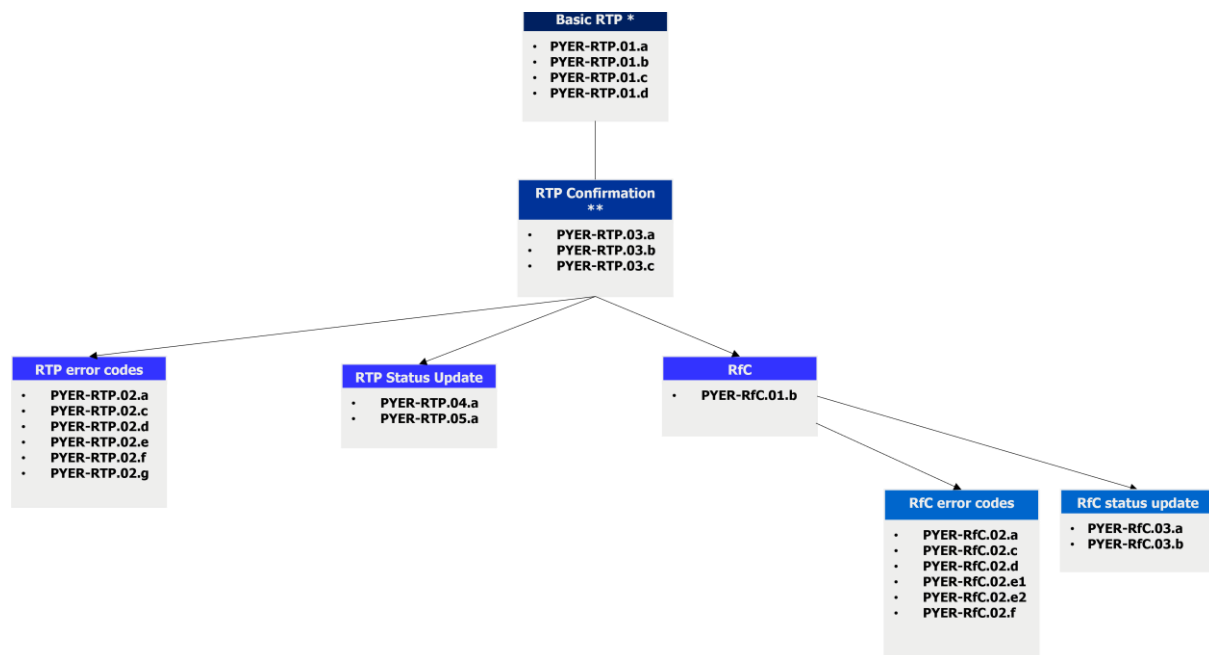
4.2. Tests groups

SRTP homologation test cases can be divided into different groups which have dependencies between them. Below are two diagrams showing these groups (test plan V5.0).

Payee's RTP SP groups :



Payer's RTP SP groups :



4.3. Homologation tool features

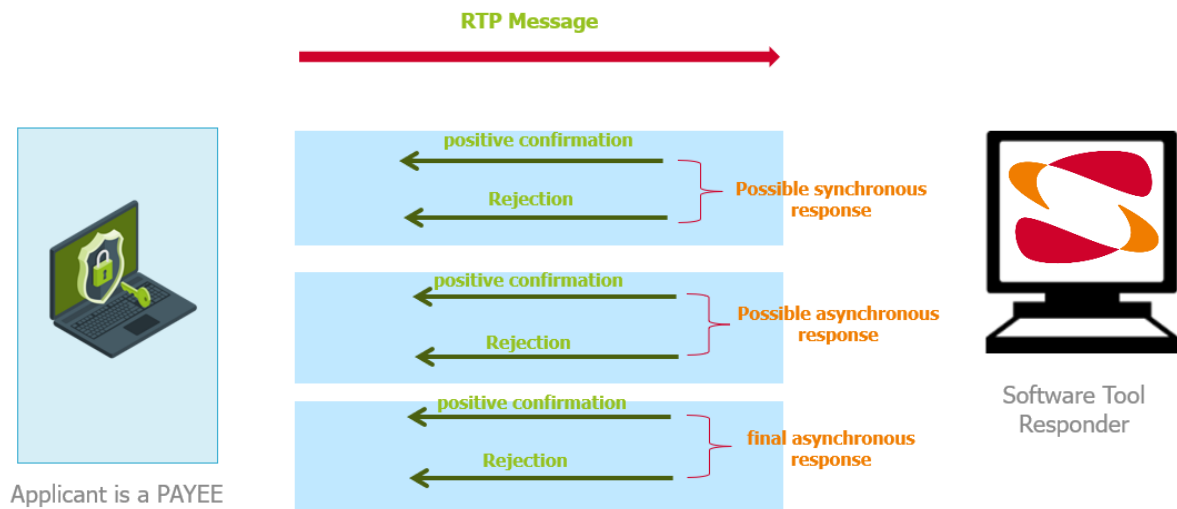
The homologation tool will be used as a responder or a requester with the following features for each mode:

- **Responder mode:**
 - Applicant assumes the role of Payee's RTP SP
 - The SUT will initiate the exchanges
 - The homologation tool assumes the role of Payer's RTP SP
 - The homologation tool will wait for an external request to answer automatically
- **Requester mode:**
 - Applicant assumes the role of Payer's RTP SP
 - The homologation tool assumes the role of Payee's RTP SP
 - The homologation tool is a transaction initiator
 - The homologator will manually execute tests to initiate message exchanges with the SUT

Important : the homologation tool uses the **amount of any RTP message** to identify which test case is being executed. All the amounts can be found for each test case within the Test Plan (see column "Amount of the RTP").

4.3.1. Responder mode

The platform is setup as following:

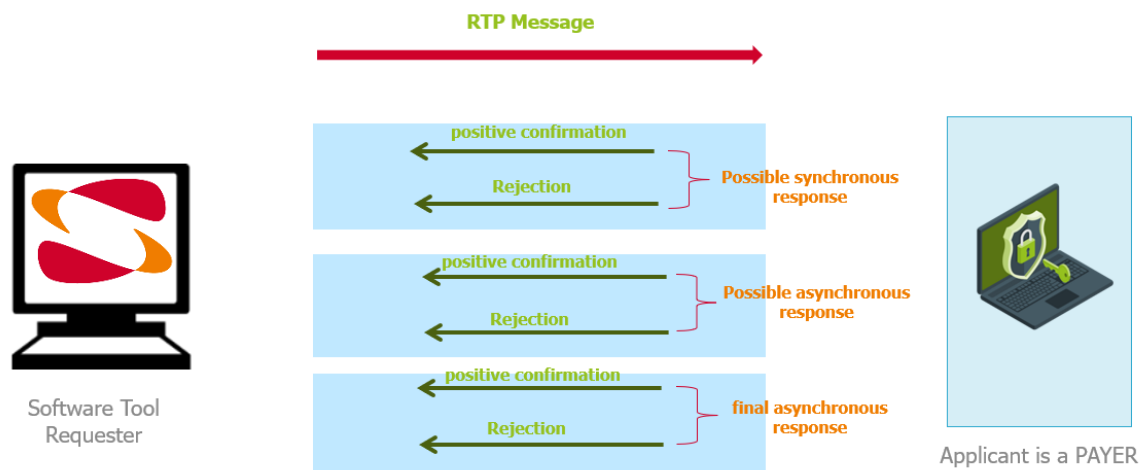


Configuration of the SUT (Payee's SP) and Simulation Tool

In this case, the SUT is initiating the message exchanges.

4.3.2. Requester mode

The platform is setup as following:



Configuration of the Simulation Tool and SUT (Payer's SP)

In this case, the simulator tool is initiating the message exchanges.

5. Final outcome

For each test case, a log is generated by the simulation tool.

Each log includes:

- all steps performed by the tool.
- all messages sent and received by the tool.
- A final test status based on the implemented verifications.

A Report will be generated at the end of the homologation with all the test cases execution results.

All the logs will be stored.

Depending on the test results, a validation of the homologation process will be decided with EPC.